

ENGINEERING THE FUTURE BEYOND STEEL

HYUNDAI STEEL PROFILE 2023



CONTENTS

01

Engineering the Future beyond Steel

02

Better Steel for Future Mobility

04

Better Steel for Future Growth

06

Better Steel for Future Generations

08

Focusing on the Success of Customers

26

Building a Strong Platform

34

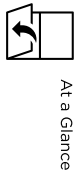
Establishing Sustainability

46

Milestones

48

Global Worksites

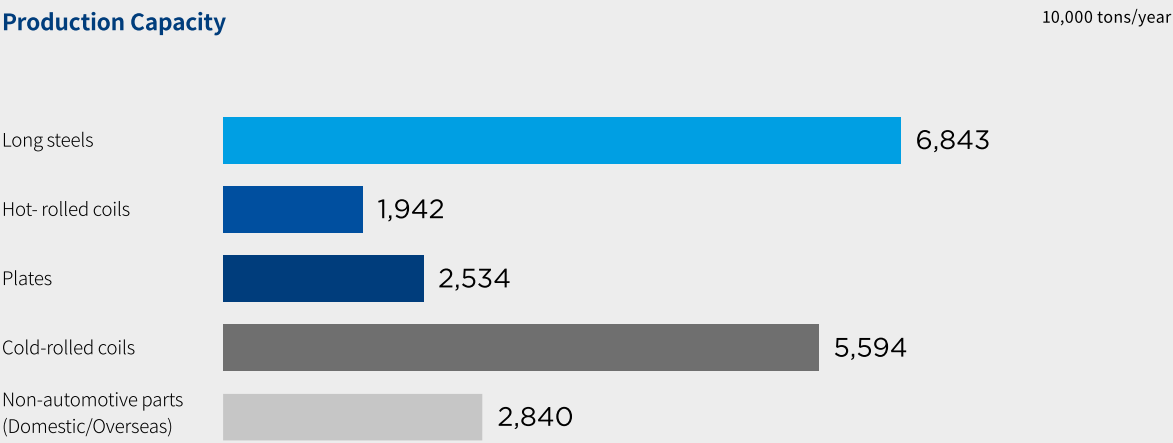
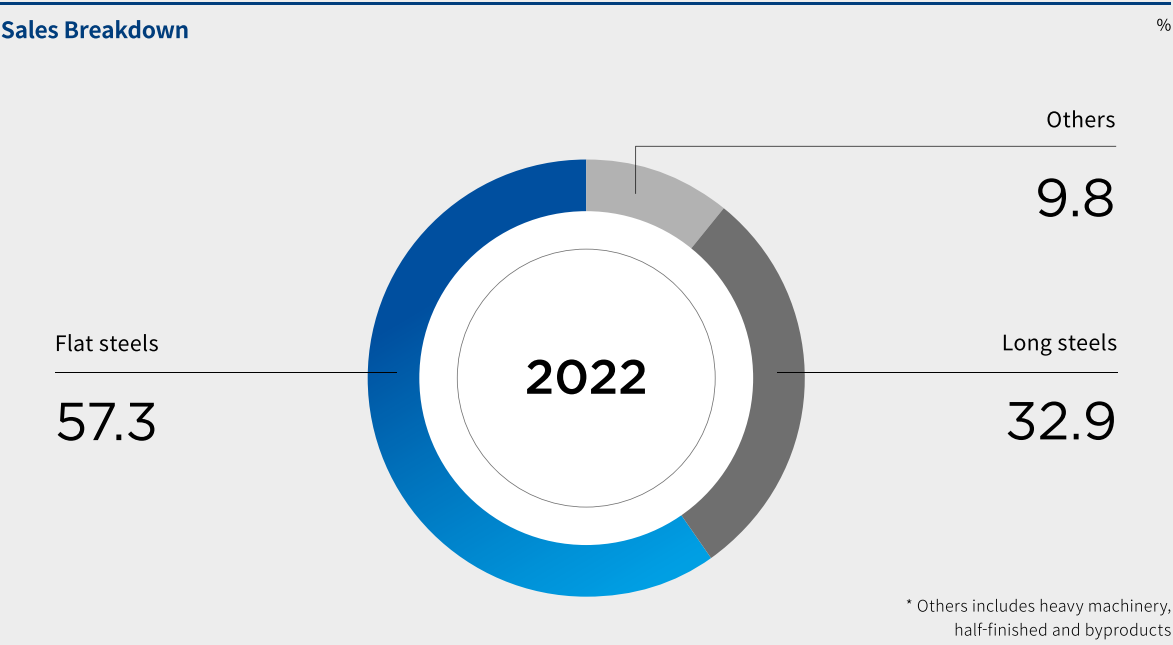


Engineering the Future beyond Steel

From automobiles and skyscrapers to home appliances and heavy machinery, steel is widely used as an integral part of our everyday lives. Innovative steel products drive industrial growth and make our lives easier. Hyundai Steel reinforces the innate competitiveness of steel and develops new growth engines in non-ferrous businesses to offer global clients with differentiated value, while playing a leading role in fundamental changes that will generate greater future value.

At a Glance

Hyundai Steel has been broadening the possibilities for the use of steel while playing a pivotal role in the industrialization of Korea over the past half century. Taking pride in its accomplishments—which includes enlarging the business domain from electric arc furnaces to blast furnaces, contributing to the success of its customers’ businesses, and reaching markets outside Korea—Hyundai Steel is continuing with its tireless R&D efforts. By looking at things from the customer’s point of view, the company is making a concerted effort to realize the infinite potential of steel as a major global steelmaker.



* Others includes steel pipes, ingots, track shoe assembly.

Engineering the Future beyond Steel

From automobiles and skyscrapers to home appliances and heavy machinery, steel is widely used as an integral part of our everyday lives. Innovative steel products drive industrial growth and make our lives easier. Hyundai Steel reinforces the innate competitiveness of steel and develops new growth engines in non-ferrous businesses to offer global clients with differentiated value, while playing a leading role in fundamental changes that will generate greater future value.

BETTER

STEEL

Steel is a key material for the automotive industry. With an annual average growth rate of 10%, the demand for steel in the automotive industry is expected to reach 1.2 billion tons by 2025. The company is also expanding its production of metal bipolar plates for hydrogen fuel cell electric vehicles (FCEVs). After we completed the first production of metal bipolar plates in 2013, Dangjin No.1 plant started mass production in March 2019. With continuous technological innovation, our production volume will gradually increase. In 2018, we have built a new production line with an annual capacity of 100,000 pieces to produce product gases from hydrogen.

Metal Bipolar Plates for Hydrogen Fuel Cell by 2025

vehicles

We are proud to contribute to safer and greener automobiles with our lightweight yet strong materials. Our core parts to fuel cell electric vehicles (FCEVs) are pivotal to building future vehicles.

AHSS Application Rate to BIW (Body-In-White) H-Solution EVs

62%



AHSS (Advanced High-Strength Steels)

A growing number of vehicles are applying advanced high-strength steels (AHSS) to meet stricter environmental requirements and collision test criteria. Hyundai Steel is actively developing and researching several new steel products and technologies, including AHSS, for advanced strength and lightweight performance of car bodies. In 2019, we launched H-Solution, a customized automobile solution that offers optimal services, from materials to component applications—and all from the customers’ point of view—declaring our commitment to become a professional technology partner to our clients.

Hydrogen Fuel Cells

Hyundai Steel has set its vision to be part of efforts in the wider distribution of FCEVs which are projected to achieve an annual average growth rate of 50%by 2030. The company is also expanding its production capacity of metal bipolar plates for hydrogen fuel cells—the key component to FCEVs. After we completed the Uiwang plant for flow plates in 2013, Dangjin No.1 plant went into operation as of March 2019. With continued investments in the facility, our production volume will gradually expand in the future. Since 2016, we have been operating hydrogen production lines with an annual capacity of 3,000 tons by utilizing the byproduct gases from our steelworks.



Metal Bipolar Plates for Hydrogen Fuel Cell by 2021

16,000 vehicles

FOR FUTURE

MOBILITY



Hyundai Steel approaches its goals from every individual client's perspective to maximize the potential of steel, while expanding its presence into the non-ferrous business area based on our accumulated business knowledge to share the benefits of innovation with customers and create greater value in the future.

BETTER STEEL

We are entering ever-larger markets to reach a wider range of customers. At the same time, we are taking a comprehensive approach in our R&D efforts to take the initiative to bring positive changes to the steel industry.

Plates

Hyundai Steel is strengthening its partnerships with global clients through consistent R&D efforts to make new and high-performing products: plates with high strength and low-temperature toughness developed for ice-breaking LNG carriers in the polar regions, and functional steel products that can tolerate ultra-low temperatures up to 170°C below zero. Meeting customers’ needs with such strategic products, Hyundai Steel now ranks 10th among the world’s most competitive steelmakers according to World Steel Dynamics (WSD), a steel-specialized analyst agency. Today, Hyundai Steel’s competitiveness is globally recognized, with the largest number of the world’s top steel products.

Resistance for fuel tanks
9% Ni heavy plate

-196°C

Temperature Needed for H-Sections to Maintain Their Yield Strength

600°C

H-Sections

In 2019, Hyundai Steel launched H-Sections, the world’s first product of its kind equipped with resistance to both heat and earthquakes. They can hold a maximum weight of 36 kg per mm² and heavier, and maintain a yield strength above 67% under a steel temperature up to 600°C— a performance level almost twice as high as conventional steel with a yield strength of 30% or lower at a steel temperature of 350°C. These properties allow H-sections to delay a building’s collapse in the event of an earthquake or fire. Hyundai Steel manufactured the first earthquake-resistant steel products in Korea in 2005, and has continued R&D efforts for technologies to enhance even more safety elements. In 2017, we released a new earthquake-resistant steel brand called H CORE.

Embracing the world

FOR FUTURE GROWTH

Hyundai continues to develop steel products for buildings to ensure they are safe from earthquakes and fires, and vessels that can navigate through deep seas and the polar regions. We also supply differentiated products to all industries, from home appliances to energy, in support of customer success.

BETTER STEEL

We seek ways to maximize the eco-friendliness of steel so that it can be recycled infinitely, while also carrying out projects that contribute to local communities and society as a whole.

Enclosed-Type Raw Material Storage

Hyundai Steel was the world's first company to develop enclosed raw material storage domes at its Dangjin Works. By enclosing all procedures, from unloading and conveying to storing raw materials, the domes generate minimal fugitive dust and have a higher efficiency in raw material storage. In addition, Hyundai Steel utilizes high-temperature byproduct gases from its blast furnaces, coke-making plants, and steelmaking works to power 80% of the entire electricity use at its Dangjin Works. Byproducts from manufacturing process are fully recycled as well. We plan to cut current air pollutant emissions in half through additional facility improvement investments.

Total length of the enclosed belt conveyor
that carries the raw materials to the storage facility

100 km



H-Steel Atelier

H-Steel Atelier is Hyundai Steel's representative culture and art social contribution project that has installed five artworks in Dangjin in 2018 and four in Suncheon in 2019. The project offers local residents and young, up-and-coming artists opportunities to engage in cultural and art activities to showcase their creative artworks and achievements with a local community. The project is considered a social contribution project that maximizes the value of corporate social responsibility activities.

H-Steel Atelier Artworks in Dangjin,
Suncheon, and Songdo

13 pieces



Commitment to sustainable development

FOR FUTURE GENERATIONS

Hyundai Steel finds solutions to make steel recycling more beneficial to the environment as it strives to enforce safety control practices at all worksites. Our code of conduct, as well as business value, is also a part of our efforts to fulfill our corporate social responsibility.

Focusing on the Success of Customers

We will never stop pursuing our commitment to the quality and functionality of our products to enhance customer value. In proactive response to rapidly changing market environments, Hyundai Steel offers customized consulting services that provide optimal solutions to customer needs based on our segmented sales networks. We constantly increase R&D investments and strategically employ application engineering plans to help customers reinforce their competitiveness so as to create differentiated value for them.

- 10 Special Features
- 12 World-Class Products
- 14 Automobiles
- 16 Construction
- 18 Energy
- 20 Home Appliances
- 22 Shipbuilding
- 24 Others

Special Features

The innovation initiatives at our client companies are usually accompanied by innovative materials. Hyundai Steel provides “customer-tailored automobile solutions” and premium construction steel material brands to focus its technology and know-how on optimal products and services from clients’ perspective. We have a number of internationally accredited world-class products that have been well heralded for their competitiveness in various industries.



H-SOLUTION

Hyundai Steel, as an automobile material specialist, adopts a differentiation strategy to gain a competitive edge in global markets in partnership with customers. In addition, we provide a wide range of automotive materials and customized services encompassing the full scope of aspects entailing performance, cost and quality optimization, such as physical properties, forming, welding, anti-corrosion, painting and the production of parts, with the aim of value creation for end-user products. Our goal is to realize an ultra-high-strength lightweight car body that maximizes safe and eco-friendly automobile technology. In 2022, we developed 1.5 Gpa MS steel plates for eco-friendly premium automobiles and succeeded in mass production of 1.8 Gpa high-strength, hot stamping steel plates for the first time worldwide, securing the company’s prominence as a global electric vehicle material specialist.

H CORE

Hyundai Steel created the premium construction steel “H CORE” through constant research in producing safe and reliable steels. H CORE, which has been upgraded from an existing earthquake-resistant steel brand to a premium steel material for all construction fields, adheres to the fundamentals with our technological capacity to ensure safety as a priority in any environment. We promise to reassure our customers in various industries by conducting continuous research and development based on our core values that promote “Caring, Optimal, Recover, and Essential.”



World-Class Products

In 2022, Hyundai Steel set a record for holding the largest number of world-class steel products in the industry for the 18th consecutive year. Qualification as a world-class product requires more than USD 50 million of market size and being number one in the amount of its exports among companies producing similar products within the country. Hyundai Steel possesses seven world-class products.

| H-Sections

H-sections were first developed domestically in 1982 by Hyundai Steel. Their universal usage spans all construction and civil works. As a result, Hyundai Steel commands unparalleled leadership in the global market with its extensive line-up of quality products that come in various sizes, types and lengths.



| Hot Stamping

Hot stamping steel can realize high strength through the hot stamping process in which blank is heated to a high temperature(900~950) for press forming and then cooled in die.



| ERW Door Impact Beam

Hot Door impact beam is pipe type steel product that is used as a reinforcement part in vehicle door to secure safety of passengers in case of a side collision accident.



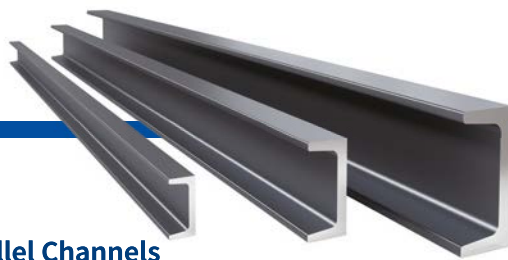
| Track Shoe Assembly

Track shoe assemblies are high-strength precision assembly parts that improve the traction of excavators and efficiently dissipate the weight of a car body, enabling the stable drive of a vehicle, even on slopes or country driving. Today, Hyundai Steel has the world's second largest market share of track shoe assembly.



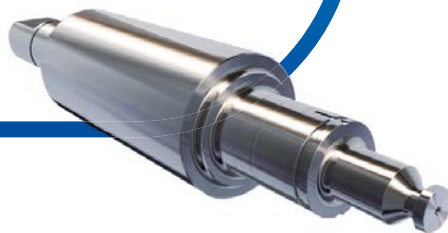
| Inverted Angles

Inverted angles are used as heavy plate stiffeners for ships, lightening the weight of large ships and diffusing any maritime-related shocks during voyages. In the early 2000s, Hyundai Steel became the world's second steelmaker to successfully develop inverted angles. Our inverted angles have been a world-class product since 2005.



| Parallel Channels

Parallel channels are steel products for construction structures in buildings and civil engineering. Their convenient assembly and joining make them instrumental in industrial machinery frames, bracing, and thrusting steel structures. In 2007, these channels received a t New Product (NEP) certificate, proving that they are an innovative product.



| HSS (High Speed Steel) Rolls

Manufactured through a centrifugal casting process by hot-rolling semi-finished steel products, Hyundai's HSS rolls feature excellent performance with respect to abrasion and heat-resistance. Hyundai Steel is constantly enhancing its products' durability to secure better longevity, size, and precision.

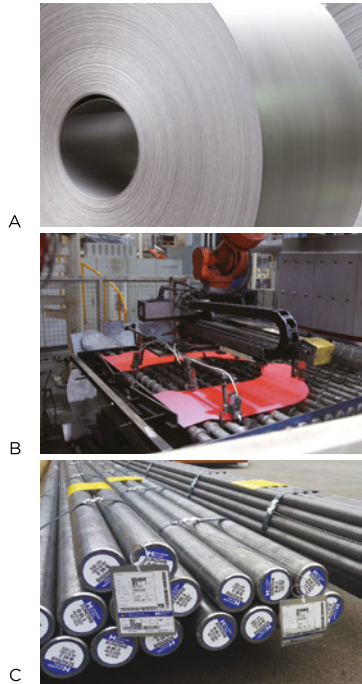
Safe, lightweight automobiles are the dream of all carmakers—and steel holds the key to meeting all three key requirements: relatively high fuel efficiency, safety, and eco-friendliness. Steel hardens in tandem with its strength, and Hyundai Steel focuses its technology R&D efforts on lightening the strength of steel without any loss in its formability. As a specialized automotive steel sheet maker, Hyundai Steel supplies top-quality automotive steel, which includes automotive steel sheets, lightweight automotive parts, and special steels.

AUTOMOBILES



51.7%

Percentage of advanced high-strength steel application to Hyundai Motor’s Genesis G90 model (tensile strength of 60 kgf/mm² and higher)



- World-class products: A certification endorsed by the Ministry of Trade, Industry and Energy (MOTIE) for Korean products that satisfy three main criteria: ranking among the top five in the global market, at least a five percent share of the world market, and an annual export value of at least USD 5 million.



A. Cold-Rolled Coils

Produced by rolling hot-rolls at room temperature, cold-rolled coils have a smooth, clean surface with an even thickness, making it the preferred material for automotive sheets for the exterior and interior as well as the car body. They can be classified into cold-rolled coils, galvannealing (GA), hot-dip galvanizing (GI), and electro-galvanizing (EG), depending on the manufacturing method.

B. Automotive Parts A World-Class product

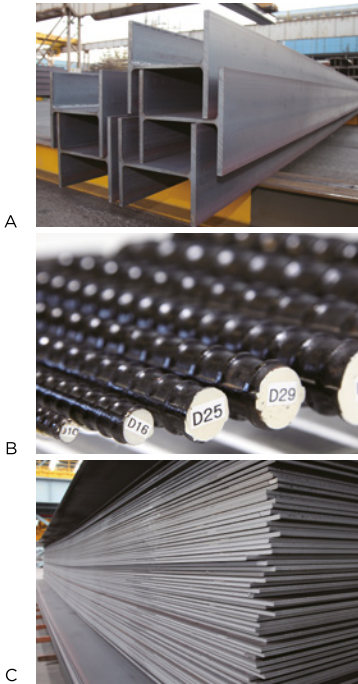
Enhancing the safety and fuel efficiency performance of automobiles requires advanced technology to raise the strength of steel while reducing its weight. Utilizing advanced engineering methods, such as hot stamping, tailor-welded blanks (TWB) and hydro-forming, Hyundai Steel produces safer light-weight automotive parts, applied mainly to major guards against collisions, the inner panels of doors and the chassis.

C. Special Steel

Special steel products include crank shafts, cone rods and various other gears for core automotive parts, such as engines or power trains that require high-strength and high-durability performance. Hyundai Steel manufactures pure carbon steels and reinforced alloy steels in the shape of steel bars, wire rods and square steels.

Steel is an essential part of the building and civil engineering industries. To ensure a high level of safety, H-sections and reinforcing bars are composed of structural members. Heavy plates are also used for mega-size bridges, such as the Bosphorus Bridge in Turkey. By drawing on our experience and expertise in long products—and with our dominant domestic market share for decades—Hyundai Steel is developing and supplying highly advanced products that meet all seismic requirements for high-rise buildings.

CONSTRUCTION



A. H-Sections A World-Class product

H-Sections are mostly used for the structures of buildings. Their high weldability and shock-resistance performance reduces the use of the steel product as well as the construction period compared to other steel products. Hyundai Steel’s diversified H-section product line-up ranges from quake-resistant SHN to checkered H-beams.

B. Reinforcing Bars

Reinforcing bars with bumps and joints on the surfaces are another preferred steel product for construction/engineering. Hyundai Steel’s ultra-high strength reinforcing bars boast top performance results in strength, workability, and weldability. Specifically, the screw-type reinforcing bars use couplers for assembly, making them the perfect material for ultra-high skyscrapers because of their relatively low price and safety.

C. Plates

Steel plates are normally 6 mm or thicker. The plates for construction use are for the steel structures/frames of steel bridges, plants and mega-sized buildings. In addition, for specs and sizes difficult to produce with H-sections, build-up beams which are made up of welded plates, are used.

-50°C

High-performance steel plates that can withstand the extreme cold of -50°C with high-strength and weldability qualities as well as workability with TMCP (Thermo-mechanically Controlled Process) engineering technology were used for the upper deck of Turkey’s Bosphorus No. 3 Bridge.

H-Sections

Reinforcing Bars

Plates

Countries around the world are in competition to extract energy sources like oil and gas under extreme weather conditions. Shale gas that is extracted from over twice the depth underground than other resources, or crude oil extracted from deep seas or the North Pole, need to travel through endless oil pipelines or giant vessels passing the wilderness of Siberia or deserts to refineries. As a result, the pipes must be able to endure extreme weather conditions. Thus, a steel product must be of high strength, shock-resistant and rustproof. When taken together, this makes steel the perfect product for energy. In order for steel products meant for energy use to meet the most extreme weather conditions, Hyundai Steel is reinforcing the stability and efficiency of its steel products.

ENERGY



A. Plates
Steel plates for plants are used for making the pressure containers that purify, refine and store crude oil or gases. Pressure containers must endure low and high temperatures, and also be able to endure decay to contain crude oils and gases with a high content of H2S. Hyundai Steel manufactures ultra-strength, ultra-thick plates for pressure containers with high weldability, which includes QT heat-processed steel plates, enabling the company to be the supplier to energy companies at home and abroad for major projects.



Steel products are everywhere in our everyday lives, from refrigerators and washing machines to TVs and kitchenware, and many of these products are made of steel. As something we use daily, these products require not only a high level of quality and workability of steel, but also aesthetic design. They should be thin and lightweight, with high corrosion resistance and high heat-resisting properties. Hyundai Steel makes use of its cutting-edge technology and facilities to manufacture and provide high-quality steel for home appliances, thereby contributing to the competitiveness of the home appliance industry.

HOME APPLIANCES

99.7%

Hyundai Steel’s EGI percentage of passing the qualification examination for outer panels for home appliances based on the criteria as presented by domestic clients

Cold-Rolled Coils

Stainless Steel



A

A. Cold-Rolled Coils

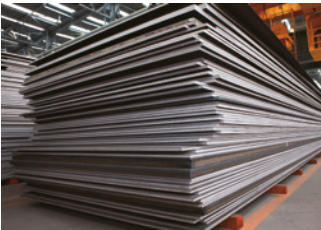
Cold-rolled coils for home appliances have universal appliance, ranging from TV bezels and back covers to outer panels of refrigerators and washing machines. Their high corrosion resistance, conductivity, and workability help bring about various designs in home appliances. Hyundai Steel also produces high-tension/high-lubricant GI and electro-galvanized steel sheets (EGI), as well as pickled & oiled steel plates (PO) that have high workability according to client needs.



Cold-Rolled Coils
(Zn-Ni EGI)

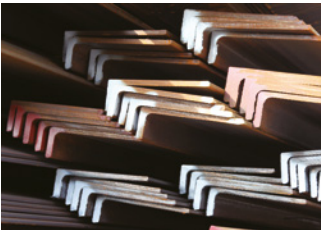
Increasing demands for high efficiency and eco-friendliness boosts the size of vessels, while the weight is growing lighter at the same time. Growing operations of ships in polar waters taking shortcuts require highly advanced technologies of steels that can withstand the extreme conditions of polar waters, with high strength and high performance in withstanding collisions and low temperatures. Hyundai Steel’s steel plates for shipbuilding have received certification from 10 major shipping classification societies.

SHIPBUILDING



A. Plates

Like the heavy plates used for construction, heavy plates used for shipbuilding refer to the thick steel plates that demonstrate high performance in low temperatures and shock resistance. The major applications are for partition walls, upper decks (or hatch covers of bulk carriers), container ships and LNG carriers. Hyundai Steel has received certification from ship classification societies of many countries with its technology to manufacture general ships and high-tensile steels.



B. Sections A World-Class product

Sections are classified into H-beams, I-beams, angles and channels, according to their shapes. As they are used as heavy plate stiffeners for ships and deck house materials, these products have advanced high-strength and shock absorption technology. Hyundai Steel’s inverted angles have been singled out as world-class products by the Korean government for their advanced technology.



Forged Steel Products

Sections

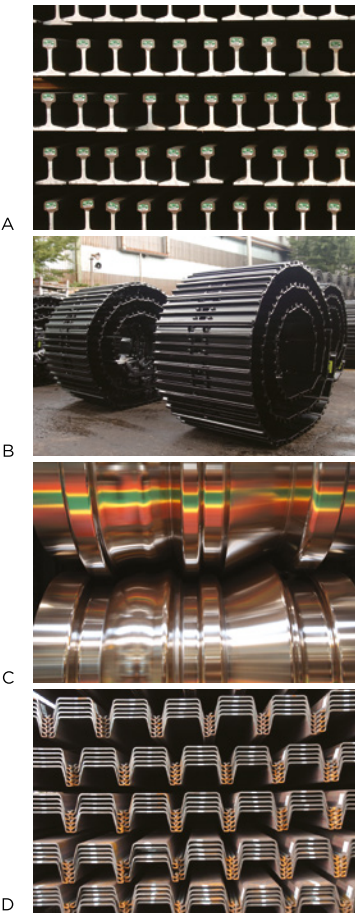
Plates

24,000

Hyundai Steel’s brittle crack arrest (BCA)-certified steels are used for building mega-sized container ships that carry 24,000 20-foot-sized containers.

High-speed railway rails, excavators, rollers and sheet piles that are used for foundation works are commonly exposed to high temperatures, pressure and friction. Therefore, with high performance to abrasion resistance and durability, as well as being high strength, these are the essential technologies required for these products. Hyundai Steel was not only the first Korean steelmaker to develop these products but has also been constantly improving the quality of its world-class products based on its years of electric arc furnace technology.

OTHERS



- A. Railway Rails

Used for various types of railways, from normal railways to high-speed and magnetic levitation tracks, railway rails demand higher strength performance than other sections and high performance in abrasion-resistance. Hyundai Steel was the first Korean steelmaker to successfully develop the first railway rails in 1979 and high-speed railway rails for the KTX in 1998.
- B. Track Shoe Assembly

A World-Class product

Track shoe assemblies entail high-strength precision technology because they have to prop up and move the heavy weight of excavators stably through sand piles and gravel heaps at bumpy construction sites.
- C. Rolls


A World-Class product

Rolls require high resistance to abrasion and heat with high durability because they are used to roll the half-finished steels, like slabs and billets, at a high temperature. Hyundai Steel products include hot-rolled steel rolls, plate rolls and long steel rolls.
- D. Sheet Piles

Sheet piles are used for dams to prop up the pressure of water or soil during civil works at rivers and streams. Their main usages include piling for tumbling bays or soil-arresting, as well as ground-making works. Adding copper to sheet piles has improved the corrosion resistance, facilitating repetitive reuse of sheet piles free of worries about rust or decay.



Track Shoe Assembly



Building a Strong Platform

Hyundai Steel's annual capacity of crude steel amounts to 24 million tons (12 million from blast furnaces and another 12 million from electric arc furnaces). At five business sites at home and abroad, we produce various products, such as flat steels and long steels. Also, Hyundai Steel's blast furnaces and electric arc furnaces play a pivotal role in Hyundai Motor Group's resource cycling model, contributing to both its industrial competitiveness and corporate social responsibility.

- 28 Resource Cycling System
- 30 Production Facilities
- 31 Steelmaking Process

Optimizing Steel Use

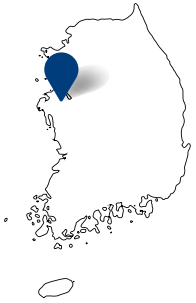
From molten metal to automobiles and all the way back again, steel is a recyclable and reusable resource. Hyundai Steel is at the center of the Hyundai Motor Group’s resource cycling model. By manufacturing molten metal from iron ore and coal through our blast furnaces, we supply the necessary materials for automotive frames and parts. We also melt down steel scrap from discarded automobiles to create molten metal for steel used in construction materials. At Hyundai Steel, we constantly seek ways to expand the use of steel on the cycling model as part of a sincere effort to fulfill our corporate social responsibility.

1st

Hyundai Steel was the world’s first steelmaker to complete a closed raw material processing system that eliminates fugitive dust.



Dangjin Integrated Steelworks



Products Hot-rolled coils, cold-rolled coils, heavy plates, reinforcing bars and special steels, Bipolar plates for fuel cells

Size 9.16 million m²

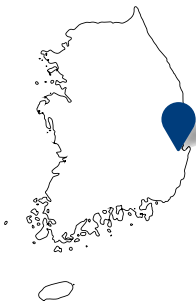
Incheon Works



Products H-sections, reinforcing bars, section steels and stainless steel

Size 920,000 m²

Pohang Works



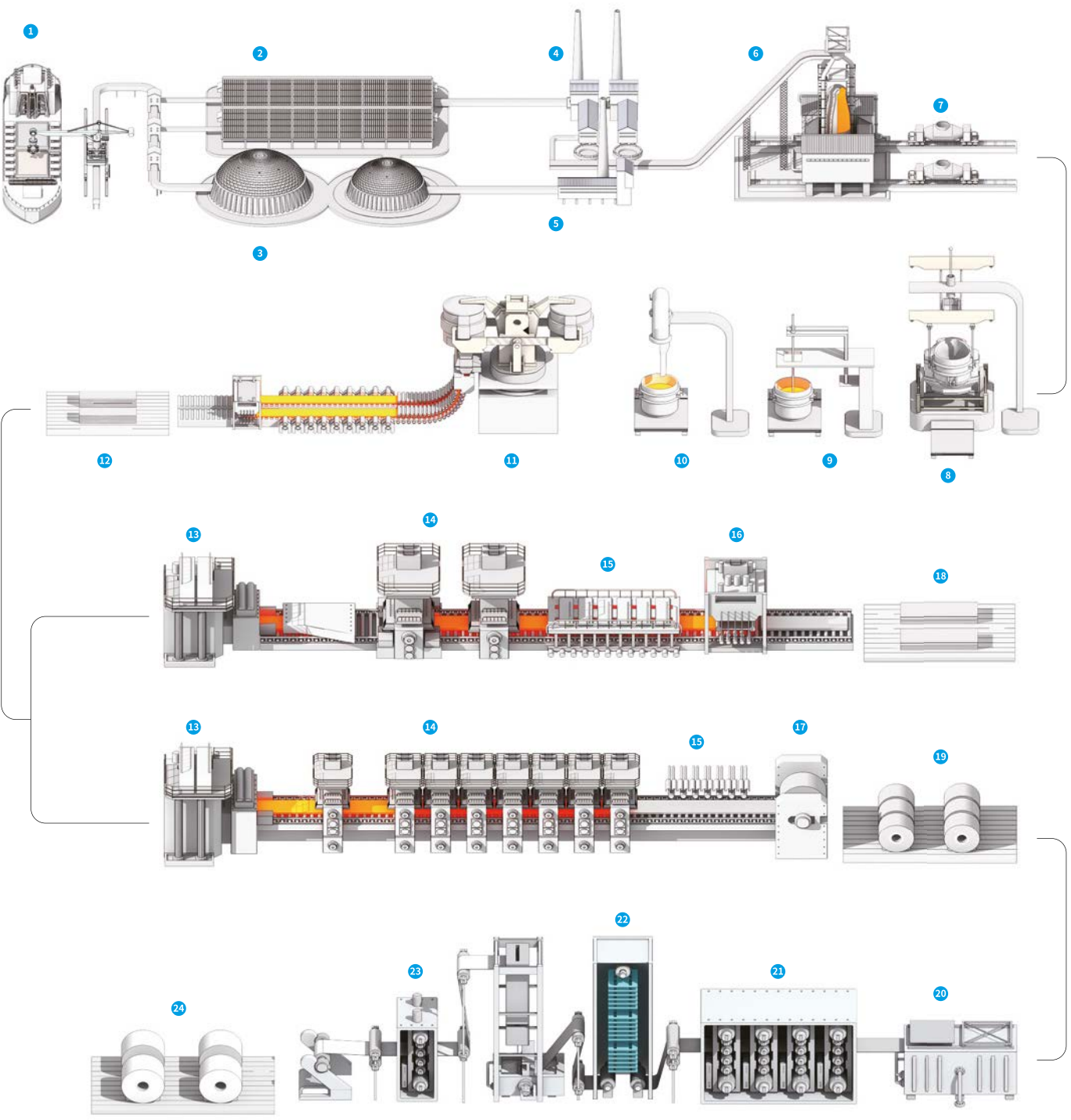
Products H sections, reinforcing bars, rails, round-shaped sections, rolls and track shoe assemblies

Size 660,000 m²



Integrated Steelworks Steelmaking Process

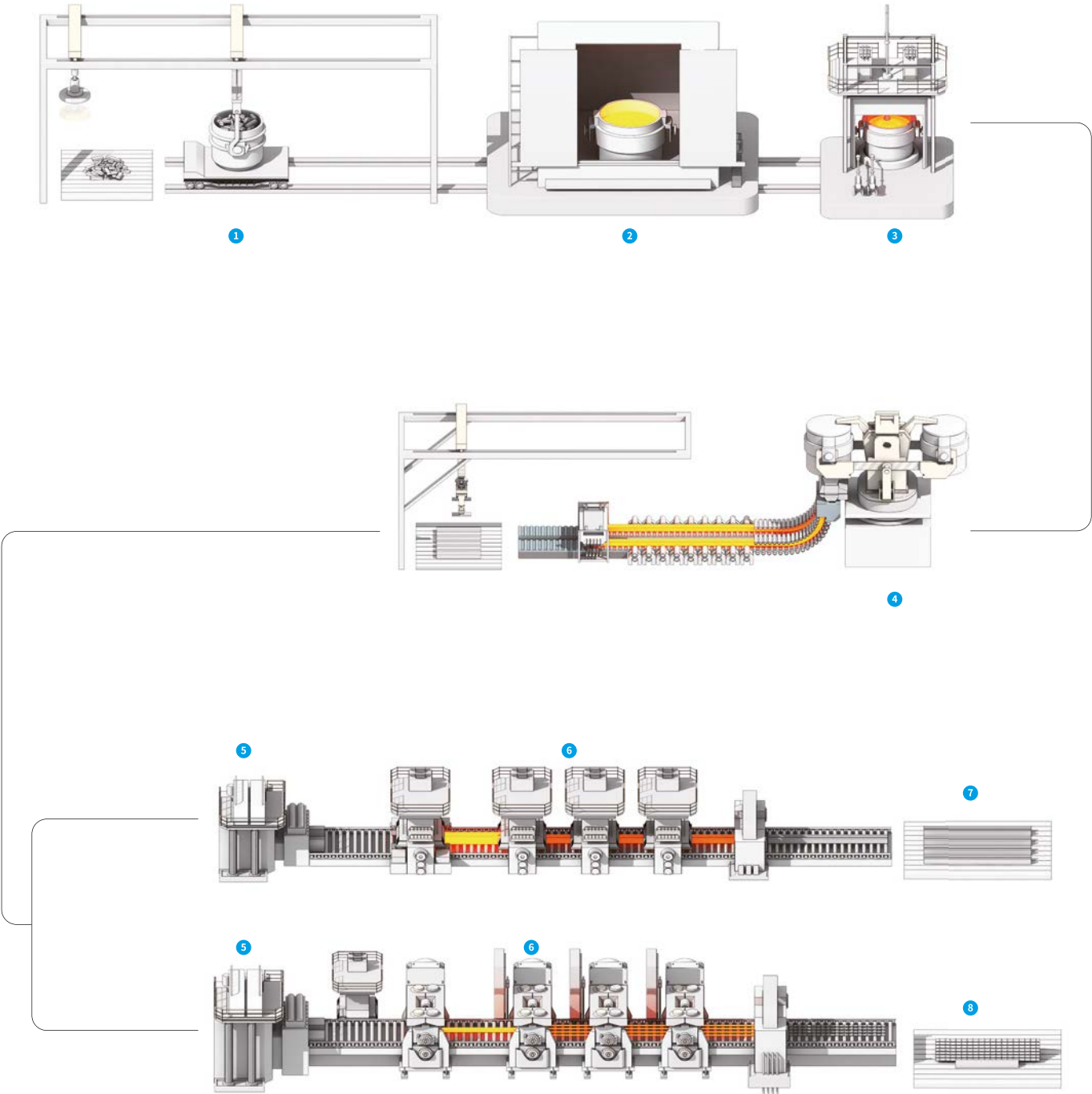
Hyundai Steel's integrated steelworks manufacture hot-rolled and cold-rolled coils, heavy plates, pipes, and lightweight automotive parts out of iron ore and coal. By melting lumps of raw materials, molten metal is generated in blast furnaces, after which it is purified in the steelmaking process and then goes on to the continuous casting process to make slabs that can also be hardened half-finished products. Those slabs are thoroughly rolled at a high temperature (above 1,100°C) in order to make hot-rolled coils. After that, the cold-rolled coils are made by rolling the HRC (hot-rolled coils) at room temperature to process for final usage, which is mainly for lightweight automotive parts.



- 1 Ports 2 Linear storages 3 Circular storages 4 Cokes plant 5 Sinter plant 6 Blast furnace 7 Torpedo ladle car 8 Molten iron pretreating equipment 9 Converter 10 Ladle furnace 11 Continuous casting machine 12 Slabs (half-finished) 13 Heating furnace 14 Rolling machine 15 Cooler 16 Cutter 17 Winder 18 Plates 19 Hot-rolled coils 20 Pickling process 21 Rolling process 22 Annealing process 23 Galvanizing process 24 Cold-rolled coils

Electric Arc Furnace Process

Hyundai Steel's electric arc furnaces use steel scrap to manufacture sections, reinforcing bars, and railway rails that are used for buildings, bridges and railways. After melting the steel scrap to make molten metal, it is then smelted to eliminate impurities before proceeding to the continuous casting process to manufacture half-finished products, such as blooms and billets. These half-finished products can be rolled by reheating to increase their size as finished products, such as sections and reinforcing bars, in various sizes and thickness.



- 1 Steel scrap 2 Electric arc furnace 3 Ladle furnace 4 Continuous casting machine 5 Heating furnace 6 Rolling machine 7 Sections 8 Reinforcing bars



Suncheon Works

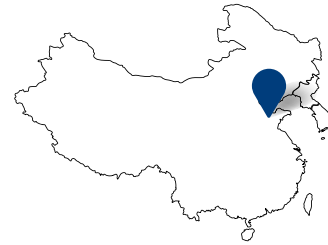


Products Cold-rolled coils, hot-dipped galvanized steel sheets, electro-galvanized steel sheets and pre-coated steel sheets

Size 822,000 m²



Qingdao Factory | China |

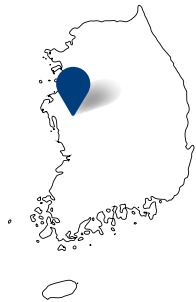


Products Rolls and track shoe assemblies

Size 66,000 m²



Yesan Works | Consignment production |



Products Lightweight automotive parts

Size 1.19 million m²

Establishing Sustainability

Hyundai Steel's sustainability management philosophy is all about improving the quality of people's lives, while also protecting nature at the same time. Everyone at Hyundai Steel shares this vision and paves the way for a safety-first total management system at our sites. We also consolidate our win-win partnerships with our suppliers to heighten our competitive edge. We are strongly committed to building a sustainable society for everyone by returning as much value as possible to our stakeholders and society at large.

- 36 Management Philosophy
- 38 Safety-First Management
- 40 Win-Win Management
- 42 Sharing Management
- 44 Sports Teams

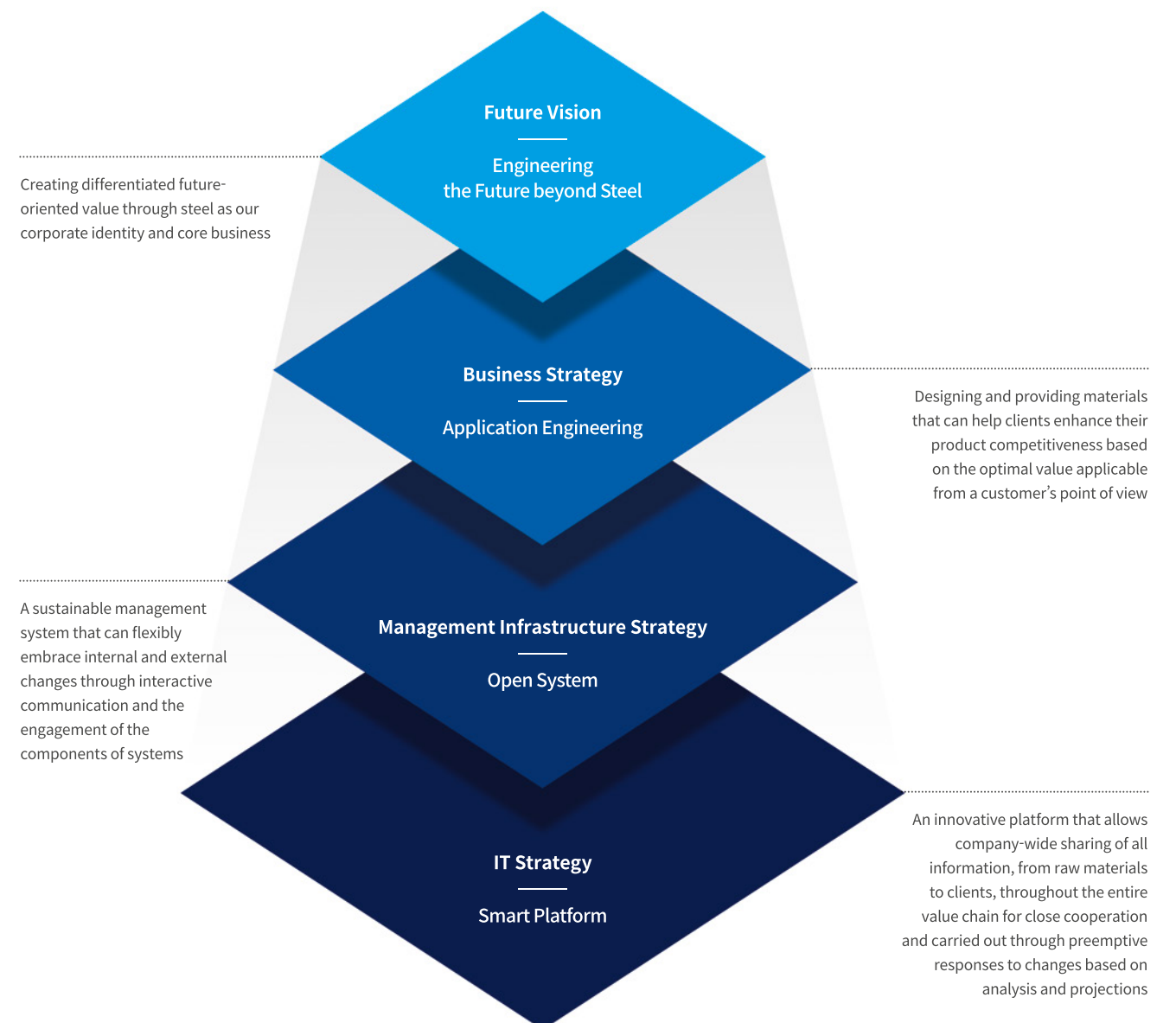


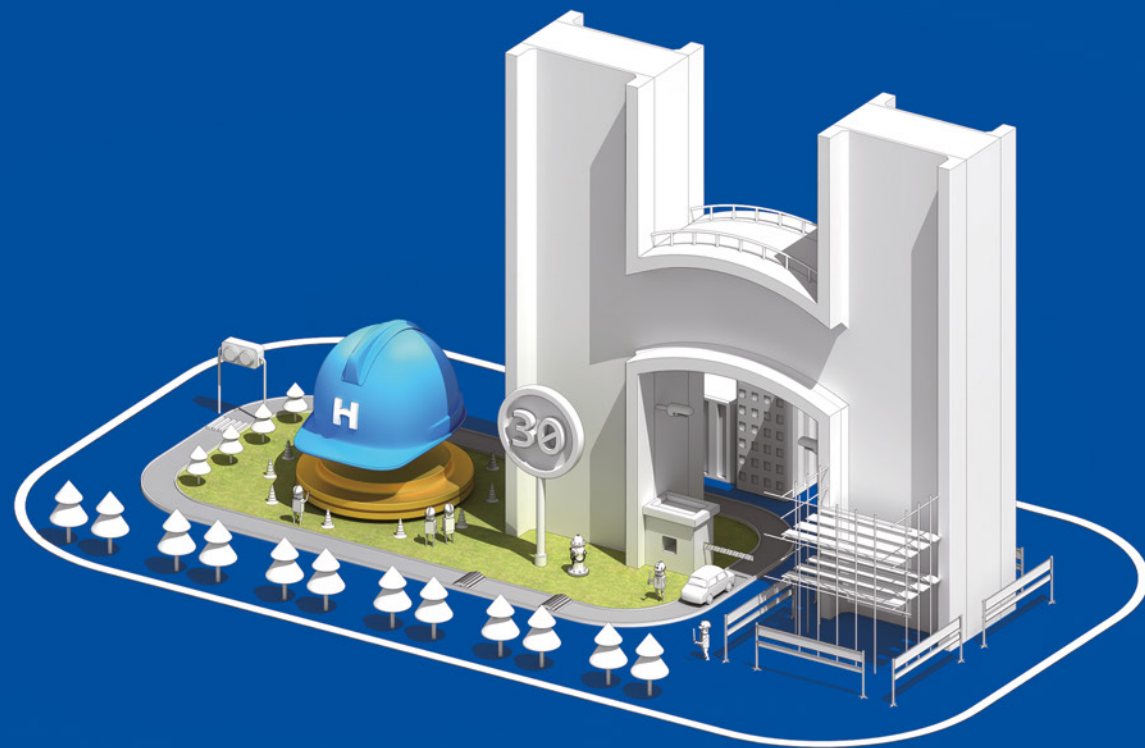
Envisioning the Next 100 Years

Hyundai Steel shares the same management philosophy of “realizing the dream of mankind by creating a new future through ingenious thinking and continuously challenging new frontiers” with the Hyundai Motor Group. In line with this, we have established a new vision—engineering the future beyond steel—and everyone at Hyundai Steel is making a concerted effort towards building a highly sustainable steelmaker.

Hyundai Steel’s Corporate Vision

The new vision is about enhancing customer value. Hyundai Steel will make use of its industry-leading technology and high-quality products to provide materials that meet customer needs. The optimal materials with high workability will facilitate our client companies to enhance their product competitiveness. Guided by this new vision of “Engineering the Future beyond Steel,” Hyundai Steel is creating innovative value with creative thinking and differentiated products, services, and business strategies.





Priorities Based on Safety

Hyundai Steel has a lofty vision concerning safety management practices.
We aim to be the undisputed leader in safety management practices
while at the same time setting the bar higher for international safety management standards.
We operate a comprehensive safety management system
based on Infrastructure, System, Culture and Health.



| Safety Vision & Goals |

Hyundai Steel has established and implemented a safety vision and health and safety policy to strengthen its safety capabilities and prevent accidents. Under the vision of “Realizing a Safe Steel Mill for the Next 100 Years,” we are strengthening safety management through various safety activities with the goal of “ZERO severe injuries and major disasters.”

| Company-wide Integrated Safety Management System |

Hyundai Steel strictly controls all its worksites, including overseas subsidiaries, in terms of safety under the company’s Health & Safety Center, which serves as the control tower. We widely monitor if safety controls are well implemented at all our business premises through Safety Management Council meetings, Safety Communication meetings, and routine safety checks. We also support other worksites with valuable information on safety practices. We have also established company-wide safety regulations and 10 Safety Core Rules to encourage the entire workforce to comply with.

| Establishing a safety culture with employee participation |

Hyundai Steel is building a safe working environment based on mutual trust and cooperation and creating a culture of field-oriented autonomous safety management. As well as listening to the voices of our field personnel, we conduct a joint labor-management safety inspection to improve on-site risk factors and operate a safety report system that allows anyone to report risk factors. We have created a safety-first culture that encourages our employees to participate in various safety activities.

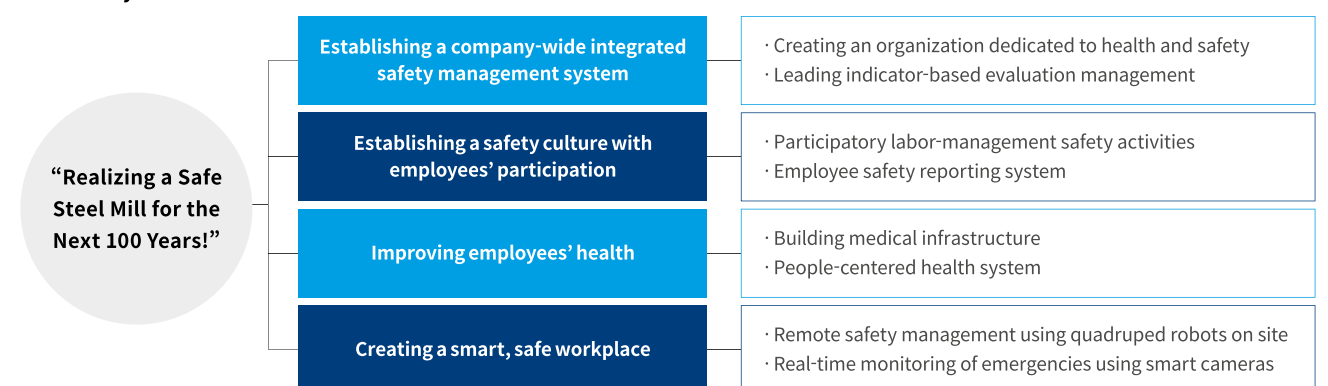
| Employee Health Promotion |

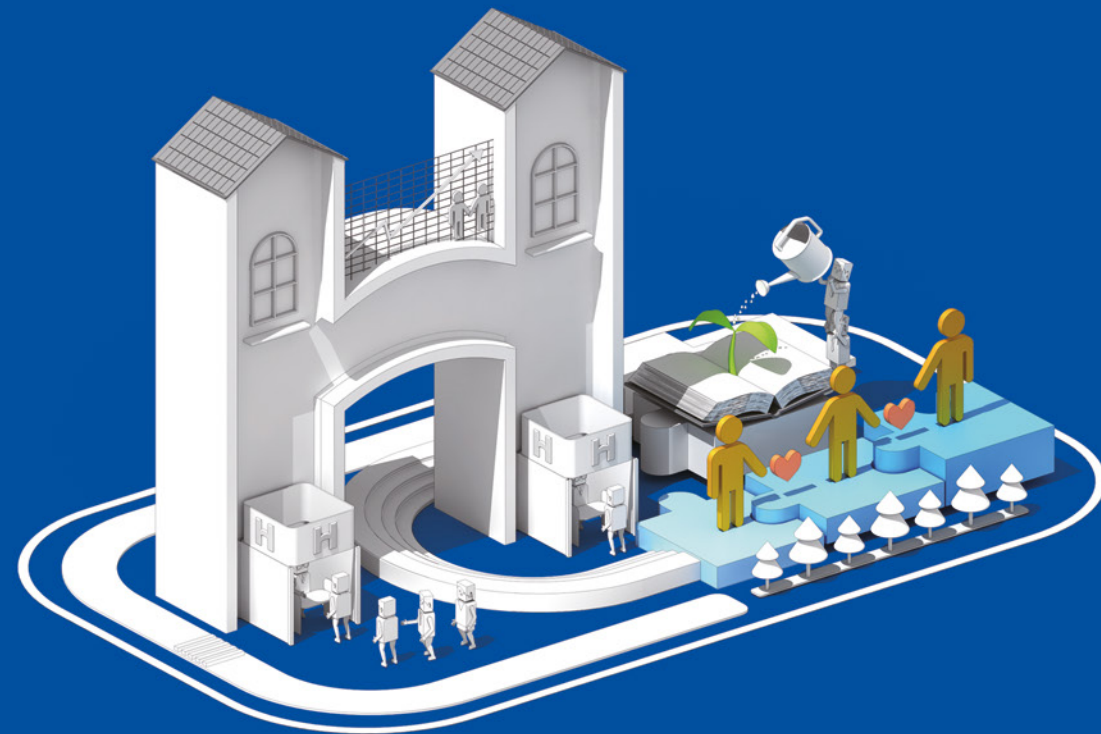
Hyundai Steel supports health check-ups for its employees and their families for the early detection and prevention of illnesses, and has taken the lead in managing employees’ health at all times by establishing an affiliated clinic, an oriental clinic, and a psychological counseling center in-house. We are also carrying out a variety activities designed to prevent occupational diseases, such as a musculoskeletal disease prevention program, and a hearing preservation program. We have established a people-centered health system by eliminating potential health risk factors in advance, such as providing consultation on improving exposure to noise, the performance of local exhaust systems, and the rest facility environment.

| Creating a smart, safe workplace n |

Hyundai Steel is establishing safe business sites by incorporating smart technology into its existing safety management system. We have introduced various smart technologies, such as on-site remote safety management using a quadruped walking robot and real-time monitoring of emergencies using smart cameras, which enable us to identify in advance and eliminate any abnormal signs and harmful risk factors that could cause industrial accidents.

2022 Safety Control Policies





Win-Win Partnerships

The success of our partners contributes to our success.

We view our partnerships on a long-term basis, and pursue mutually beneficial growth through strong collaboration. With the aim of reinforcing the competitiveness of our partners, we provide comprehensive support in all related areas, such as technology R&D, employee training, and funding. We also maintain close communication and share our performance results with our suppliers based on strong partnerships.



| Fair Transactions and Our Ethics Charter |

Hyundai Steel has complied fully with the fair trade laws and regulations since signing fair trade agreements with its suppliers in 2011, and has operated the in-house fair trade compliance program to establish the fair trade order since 2002.

Moreover, to firmly embed ethical management in all our business activities, we produce and distribute promotional materials related with the Code of Conduct and the Ethical Management Charter.

| Technology and Operations Support |

Hyundai Steel files joint patent applications for collaborative research and development with its suppliers and covers the cost of maintaining patents.

Our suppliers can secure operating funds through Hyundai Steel's low-interest loan support. We have also established an online recruitment center dedicated to Hyundai Steel's suppliers to assist with the identification and recruitment of talents and to provide training courses optimized for fieldwork for our suppliers' employees in cooperation with specialized training bodies.

| Communication and Performance Sharing |

Hyundai Steel visits all its suppliers every year to offer guidance on our shared-growth programs, listen to suppliers' suggestions, and provide feedback.

In addition, we operate a performance-sharing system to facilitate the accomplishment of our common goals and share the results with our suppliers. In this way, we contribute to enhancing technological competitiveness, expanding volume and sales of product, and developing the domestic and overseas markets of our suppliers.

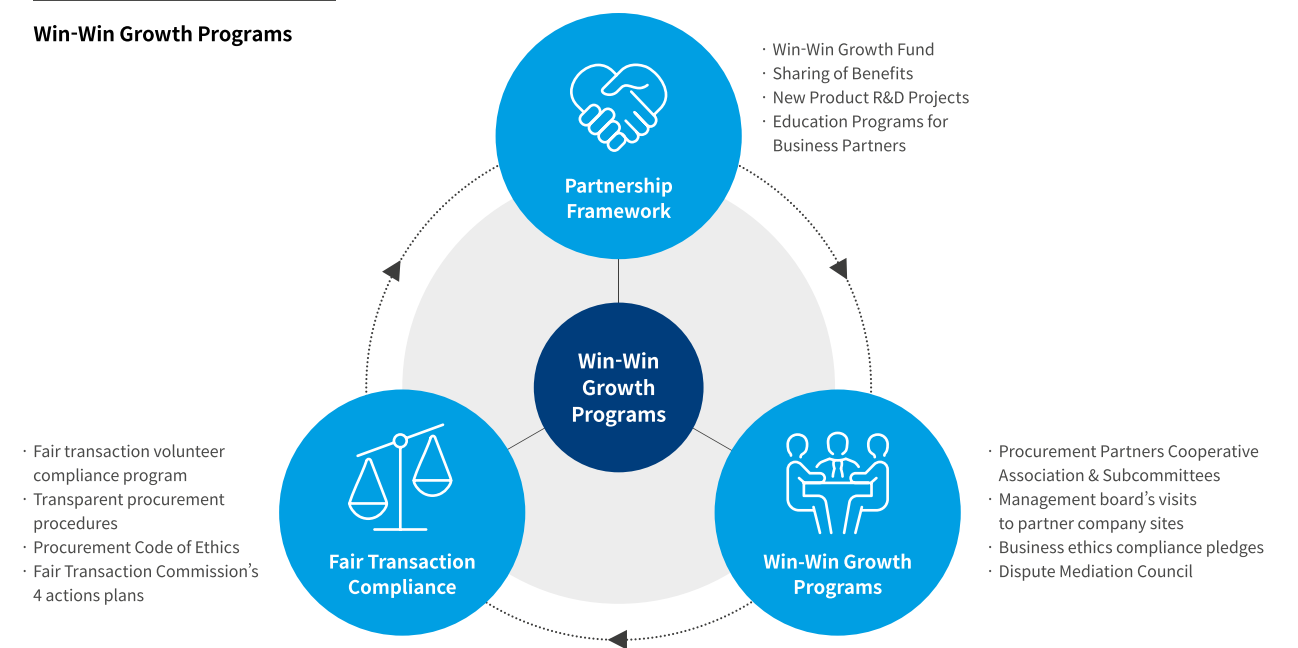
Funding status (KRW 100 million)

2020년 **1,036**

2021년 **971**

2022년 **934**

Win-Win Growth Programs





Engaging the Community

Hyundai Steel attunes its social contribution vision and strategies to address issues which fall in line with its business resources. Living up to our reputation as a world-class company, we practice social contribution activities in three major areas: value circulation, stakeholder communication, and social innovation. Under the social contribution slogan of “Hyundai Steel, always with you,” Hyundai Steel will move forward in its constant and sincere commitment to its social responsibilities.



| Sustainable Circulation |

Hyundai Steel is committed to creating sustainable social values by exploiting its resources and capabilities. The House Repair of Hope Project, launched in since 2011, is a long-term project that has improved the living environment of 1,000 disadvantaged families and enhanced numerous welfare facilities. The project has achieved three major results: reduction of energy costs, reduction of carbon emissions, and creation of good-quality jobs. The Coffee Waste Recycling Project, an ongoing collaborative project with Incheon Metropolitan City launched in 2018, aims to recycle and commercialize waste via our resource-recycling business structure. The project has established itself as a model for public-private cooperative environmental projects by reducing greenhouse gas emissions, enabling the participation of Self Enterprises, and contributing to the improvement of the relevant government systems.

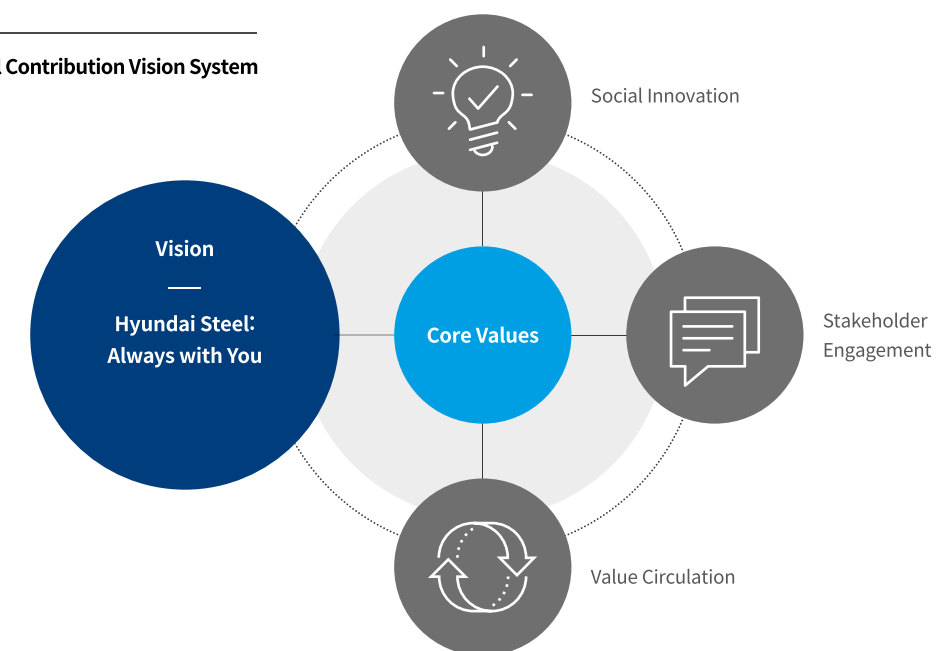
| Communication and Engagement |

Hyundai Steel brings about positive change through communication and participation by providing opportunities for its employees and stakeholders to participate in social contribution activities. The Volunteer Group, in which our employees participate voluntarily, identifies and meets the needs of underprivileged members of our society and weak links. Furthermore, the employees' wives volunteer group engages in social contribution initiatives, including environmental and welfare-related activities, in the local community near each business site. Meanwhile, H Atelier is an ongoing project to promote local culture and art by using the artistic value of steel and to create cultural assets in local communities by nurturing artists specializing in iron works.

| Making Changes for a Better World |

Hyundai Steel's social contributions are not limited only to Korea. Hyundai Steel supports the accomplishment of the UN SDGs by carrying out social contribution activities tailored to the needs of the countries in which it operates and the local communities near its business sites. For example, the Happy Safe Village project in Chennai, India was a three-year project to improve hygiene, the environment, education, and safety for local youth and residents, earning high praise from the local communities concerned. In addition, in Tianjin, China, the first kitchen focused on providing healthy food to promote the health of the elderly was opened in 2021, and a third kitchen is scheduled to open by 2023.

Social Contribution Vision System



47%

Percentage of employees participating in social contribution in 2022



150

Investment in the environment in 2022
KRW 15.0 billion



Embracing Sports

Hyundai Steel operates a women's soccer team and a men's archery team, contributing to the development of the nation's sports industry.

For more than 20 years, we have mobilized every resource to provide the best training conditions for athletes so that they can realize their full potential to succeed in world sports competitions.

Going forward, Hyundai Steel's sports teams will retain the full support of the company.



| The Red Angels Women's Soccer Team |

Established in 1993 as Korea's first women's professional soccer team, the Red Angels have played a pivotal role in the development of women's soccer in Korea. The Red Angels have been ten-time winners (2013-2022) of the WK-League championship. It is the nation's top women's soccer team and has many distinguished players who are also playing for Korea at the FIFA Women's World Cup.

| Men's Archery Team |

Launched in 1993 along with the women's soccer team, Hyundai Steel's men's archery team has been at the forefront of Korea's world's top-ranking archery. Han Seung-hoon won two gold medals at the Bangkok Asian Games in 1998; Oh Jin-hyeok was the gold medalist in the men's individual competition at the London Olympic Games in 2012; and Ku Bon-Chan was the gold medalist in both the individual and group categories at the 2016 Rio Olympic Games. In 2016, we constructed a new archery field to provide our athletes with the very best training conditions.

At the 2019 World Archery Championships, Jong-ho Kim won gold medals in both the Compound Group and Combined Team competitions. This totaled 10 medalists for our team at international events. To this day, Hyundai Steel continues to provide all available support to help athletes concentrate on their training.

| CSR Activities in Sports |

Korea's Red Angels women's soccer team lends their talent to promote women's soccer in Korea and abroad. In Korea, the team has been running soccer classes for girls at elementary schools in Incheon since 2016. From 2017 to 2019, a total of eight players from these schools were scouted to middle school girls' soccer teams. In 2016, the team signed a three-year agreement with a middle school in Chongqing, China to train a girls' soccer team as well as support friendly matches and support infrastructure improvement. As a result, the girls' soccer team did extremely well in their local tournaments, and two of the players were signed by Italian soccer teams.



10

Unified champion for 10 consecutive years in 2022



30

Formed the women's soccer team and the men's archery team in 1993.
In operation for 30 years since its establishment

Hyundai Steel Women's
Football Club Red Angels



Hyundai Steel Company
Men's Archery Team



Milestones

Over the past six decades, Hyundai Steel has recorded historic firsts in many areas, from manufacturing the nation’s first H-beams in 1982 to the construction of Korea’s first integrated steelworks built through private funds to the world’s first closed raw material processing system. Hyundai Steel is striding into global markets as a leading global steelmaker, with its 24 million tons of annual steel production capacity at nine worksites at home and overseas. Drawing on its years of experience and infrastructure, Hyundai Steel is moving on to its next phase under the new vision of “Engineering the Future beyond Steel.”

1950s

Jun. 1953
Foundation of Korea Heavy
Industry Corporation

1980s

Mar. 1982
Start of operations at
H-section mill

May. 1987
Initial public offering

1990s

Dec. 1999
Establishment of Qingdao
Hyundai Machinery Co., Ltd.

2000s

Apr. 2001
Incorporated into the
Hyundai Motor Group

Oct. 2004
Merger with Hanbo Steel’s
Dangjin Works

Oct. 2006
Groundbreaking ceremony of
integrated steelworks

2010s

Jan. 2010
Blow-in of blast furnace No. 1

Apr. 2010
Completion ceremony for
the integrated steelworks

Nov. 2010
Blow-in of blast furnace No. 2

Sep. 2013
Blow-in of blast furnace No. 3

Jul. 2015
Acquisition of Hyundai Hysco

Oct. 2015
Completion of the
special steel plant

Nov. 2017
Launch of the earthquake-resistant
steel product brand H CORE

Apr. 2019
Launch of H-Solution, an automobile
steel solution brand

Nov. 2019
Wear resistant steel brand WEAREX
launching

Sep. 2020
High strength steel brand ULTREX
launching

Sep. 2022
Relaunched H CORE, a premium
construction steel brand.

Global Worksites

Hyundai Steel runs four works and one sales branch in Korea on top of its headquarters in Pangyo. The overseas network includes the Qingdao plant, 15 local subsidiaries, and 8 overseas sales branches in 14 countries around the world. Going forward, Hyundai Steel will continuously solidify its market position as a leading global steelmaker by expanding its global networks. To that end, we are strengthening our competencies in production, sales, and services through constant R&D as part of our commitment to customer-oriented management.

Subsidiaries and Sales Offices

- 14 Hyundai Steel America, Inc.
200 Team Member Lane, Greenville, AL 36037, USA
Tel +1-334-382-4311
- 15 Hyundai Steel Industry and Trade Brazil LLC
Avenida Hyundai, 1505 Agua Santa-Piracicaba, Sao Paulo, 13413-500 Brazil
Tel +55-19-3430-5803
- 16 Hyundai Steel Mexico S. DE R.L. DE C.V.
Carretera Municipal Pesqueria-Los Ramones Km. 13-15, Interior. 14 y 15 Pesqueria, Nuevo Leon. C.P. 66679, Mexico
Tel +52-81-8852-5950
- 17 Hyundai Steel Georgia, inc.
90 Kona Drive, Ellabell, GA 31308, USA
Tel +1-912-940-7700

Branches / Office

- 30 Hyundai Steel USA, Inc.
16200 Park Row, Suite 270, Houston, TX 77084, USA
Tel +1-281-578-5328
- 31 Hyundai Steel L.A. Office
10550 Talbert Ave. Fountain Valley, CA 92708, USA
Tel +1-714-594-1699
- 32 Hyundai Steel Company Washington DC LLC
Suite 512, 1660 L St NW, Washington, DC 20036, USA
Tel +1-202-209-9294
- 33 Hyundai Steel Mexico City Office
Calle Rio Lerma 232, Piso 23, Cuauhtemoc, 06500, Mexico City, Mexico
Tel +52-55-8852-7989

- Domestic plants and sales offices
- Steel Service Centers
- Overseas sales branches,
- Overseas office

Overseas office

4 offices

Subsidiaries and Sales Offices

- 18 Hyundai Steel Slovakia s.r.o
Mobis ullica 417/1A, 013 02 Gbel'any, Slovakia
Tel +421-41-515-7899
 - 19 Hyundai Steel Czech s.r.o
Hyundai 333/5, 739 51 Nosovice, Czech Republic
Tel +420-558-419-311
 - 20 Hyundai Steel TR Automotive Steel Parts Co., Ltd
Kocaeli Asim Kibar O.S.B. Ataturk Mah. 4. Cad. No:2, Alikahya / Izmit / Kocaeli / Turkey
Tel +90-262-310-2016
 - 21 Hyundai Steel Rus LLC
20, Liter "P", Levashovskoe highway, Sestroretsk, Saint-Petersburg, 197701, Russia
Tel +7-812-418-0902
- Branches / Office
- 28 Hyundai Steel Dubai Office
#1707, Preatoni Tower, Cluster L, JLT, P.O.Box 337717, Dubai, UAE
Tel +971-4-385-4788
 - 29 Hyundai Steel Frankfurt Office
Strahlenbergerstrasse 112, 63067 Offenbach, Germany
Tel +49-69-271472-783

Overseas subsidiaries

15 subsidiaries

Subsidiaries and Sales Offices

- 7 Hyundai Steel Investment (China) Co., Ltd
TEDA Industrial Park No.65 Bibo East Street, Hangu District, Tianjin, 300480 China
Tel +86-186-0267-8373
- 8 Hyundai Steel Tianjin Co., Ltd
TEDA Industrial Park No.65 Bibo East Street, Hangu District, Tianjin, 300480 China
Tel +86-150-6150-5025
- 9 Hyundai Steel Suzhou Process Co.,Ltd
No.26 Zijing Road, South Area, Economic & Technological Development Zone, Zangjiagang, Jiangsu, 215600 China
Tel +86-512-8255-5616
- 10 Qingdao Hyundai Steel Machinery Co., Ltd
North of No.8 Rd. East of zhuzhou Rd., Jiaozhouwan Industry Park, Qingdao, Shandong, China (266300)
Tel +86-532-8727-3900
- 11 Hyundai Steel Jiangsu Process Co., Ltd
No.51 Huangshan South Road, Economic Development Zone, Yancheng, Jiangsu, China (224007)
Tel +86-515-814-0020
- 12 Hyundai Steel Chennai Ltd
No.49, Sengadu Village, Sriperumbudur - Manavalanagar Via Kancheepuram District, Tamil Nadu, Chennai - 602002, India
Tel +91-44-2767-0010
- 13 Hyundai Steel India Private Ltd (Pune Branch)
※ Schedule to operate in Aug, 2025
RMK Industrial Park IV, Gate No, 147, 148 & 165, Mangrul Village, Maval taluk, Pune District, Maharashtra, 410507 India
Tel +91-63853-59044

Branches / Office

- 22 Hyundai Steel Suzhou Process Co., Ltd Shanghai Office
Room 2108, No, 1699, Gubel Road, Minhang district, Shanghai, 201103 China
Tel +86-21-6082-0361
- 23 Hyundai Steel Company Tokyo Branch
Shiroyama Trust Tower 18F, 4-3-1 Toranomon, Minato-ku, Tokyo, 105-6018, Japan
Tel +81-3-6402-3260
- 24 Hyundai Steel Company Singapore Branch
152 Beach Road, #11-02 Gateway East, Singapore 189721
Tel +65-6341-5081
- 25 Hyundai Steel Hanoi Office
#1020, Pacific Place Building, 83B Ly Thuong Kiet, Hanoi, 11000 Vietnam
Tel +84-24-3946-1065
- 26 Hyundai Steel Beijing Office
Room 401, Hyundai Motors Tower, No. 38 Xiaoyun Road, Chaoyang District, Beijing, China (100027)
Tel +86-10-8453-9229
- 27 Hyundai Steel New Delhi Office
2F.,Plot No, C-111A, City Center, Sector 29, Gurugram, Haryana-122022, New Delhi, India
Tel +91-12-4437-1178

Domestic Network

- 1 Pangyo Office
(8th~11th floor of Greits Pangyo)117, Bundangnaegok-ro, Bundang-gu, Seongnam-si, Gyeonggi-do, Republic of Korea
Tel: +82-31-510-2114 / Fax: +82-31-510-2150
- 2 Incheon Works
63 Jungbongdae-ro Dong-gu, Incheon Metropolitan City, Republic of Korea
Tel: +82-32-760-2114 / Fax: +82-32-763-5046
- 3 Pohang Works
6363 Donghaean-ro, Nam-gu, Pohang City, Gyeonsangbuk-do, Republic of Korea
Tel: +82-54-271-1114 / Fax: +82-54-271-1241
- 4 Dangjin Integrated Steelworks
1480 Bukbusaneopno, Songak-eup, Dangjin City, Chungcheongnam-do, Republic of Korea
Tel: +82-41-680-0114 / Fax: +82-41-680-1199
- 5 Suncheon Works
300 Indeok-no, Haeryong-myeon, Suncheon City, Jeollanam-do, Republic of Korea
Tel: +82-61-720-4114 / Fax: +82-61-723-5256
- 6 Daegu Sales Office
2th Floor, Kyobo Life Insurance, 2330, Dalgubeol-daero, Suseong-gu, Daegu, Republic of Korea
Tel: +82-53-745-1871 / Fax: +82-53-745-1875

Overseas sales branches

8 branches

Global Worksites

Hyundai Steel runs four works and one sales branch in Korea on top of its headquarters in Pangyo. The overseas network includes the Qingdao plant, 15 local subsidiaries, and 8 overseas sales branches in 14 countries around the world. Going forward, Hyundai Steel will continuously solidify its market position as a leading global steelmaker by expanding its global networks. To that end, we are strengthening our competencies in production, sales, and services through constant R&D as part of our commitment to customer-oriented management.

- Domestic plants and sales offices
- Steel Service Centers
- Overseas sales branches, Overseas office

Subsidiaries and Sales Offices

14 Hyundai Steel America, Inc.
200 Team Member Lane, Greenville, AL 36037, USA
Tel +1-334-382-4311

15 Hyundai Steel Industry and Trade Brazil LLC
Avenida Hyundai, 1505 Agua Santa-Piracicaba, Sao Paulo, 13413-500 Brazil
Tel +55-19-3430-5803

16 Hyundai Steel Mexico S. DE R.L. DE C.V.
Carretera Municipal Pesqueria-Los Ramones Km. 13-15, Interior. 14 y 15 Pesqueria, Nuevo Leon. C.P. 66679, Mexico
Tel +52-81-8852-5950

17 Hyundai Steel Georgia, inc.
90 Kona Drive, Ellabell, GA 31308, USA
Tel +1-912-940-7700

Branches / Office

30 Hyundai Steel USA, Inc.
16200 Park Row, Suite 270, Houston, TX 77084, USA
Tel +1-281-578-5328

31 Hyundai Steel L.A. Office
10550 Talbert Ave. Fountain Valley, CA 92708, USA
Tel +1-714-594-1699

32 Hyundai Steel Company Washington DC LLC
Suite 512, 1660 L St NW, Washington, DC 20036, USA
Tel +1-202-209-9294

33 Hyundai Steel Mexico City Office
Calle Rio Lerma 232, Piso 23, Cuauhtemoc, 06500, Mexico City, Mexico
Tel +52-55-8852-7989

Overseas sales branches

8 branches

Overseas

Subsidiarie

18 Hyundai St
Mobis ullica 417
Slovakia
Tel +421-41-515

19 Hyundai St
Hyundai 333/5,
Czech Republic
Tel +420-558-41

20 Hyundai St Parts Co., L
Kocaeli Asim Ki
4. Cad. No:2, Ali
Turkey
Tel +90-262-310

21 Hyundai St
20, Liter “P”, Lev
Sestroretsk, Sai
Russia
Tel +7-812-418-

Branches / O

28 Hyundai St
#1707, Preatoni
P.O.Box 337717
Tel +971-4-385-

29 Hyundai St
Strahlenberger
Offenbach, Ger
Tel +49-69-2714

Engineering the Future beyond Steel

